

# Eurasian Milfoil Management Report Lake George 2016



Submitted to:



**The Lake George Park Commission (LGPC)**  
75 Fort George Rd, Lake George, NY 12845  
[www.lgpc.state.ny.us](http://www.lgpc.state.ny.us)

THE FUND *for* LAKE GEORGE



**The Fund for Lake George (FUND)**  
PO Box 352, Lake George, NY 12845  
[www.fundforlakegeorge.org](http://www.fundforlakegeorge.org)



**The Lake George Association (LGA)**  
2392 New York 9N, Lake George, NY 12845  
[www.lakegeorgeassociation.org](http://www.lakegeorgeassociation.org)



Table of Contents

Acknowledgements..... 3

Executive Summary..... 4

Table 1. 2016 Total Bags Harvested/High Priority Sites..... 6

Chart 1. Diver Hours vs. Bags Harvested per Year..... 7

Chart 2. 2016 Harvest Totals in Pounds..... 8

Chart 3. Total Harvest by Year in Pounds..... 9

Northwest Bay Harvest Map (Site 1)..... 10

Sunset Bay Harvest Maps (Site 6)..... 11

Lake George Village Harvest Maps (Site 7)..... 12

Warner Bay Harvest Maps (Site 11)..... 13

Harris Bay Harvest Maps (Site 14)..... 14

Dunham’s Bay Harvest Maps (Site 19)..... 15

Bay SW of Cannon Point Harvest Maps (Site 26)..... 16

North Tea Island Bay Harvest Maps (Site 30)..... 17

Gull Bay Harvest Maps (Site 48)..... 18

Elizabeth Island Harvest Maps (Site 107)..... 19

Glenburnie – Blair’s Bay Harvest Maps (Site 117)..... 20

Table 2. Bag Totals by Site..... 21

2016 Project Recap..... 29

    Initial Plan..... 29

    Actual Plan..... 30

2017 Strategy..... 30

Conclusion..... 31



## Acknowledgements

Aquatic Invasive Management would like to thank all who were involved, contributed and supported our efforts to help make the season productive and efficient.

- The Lake George Association (LGA)
- The Fund for Lake George (FUND)
- The Lake George Park Commission (LGPC)
- The Lake George Watershed Coalition (LGWC)
- Village of Lake George
- Town of Hague
- Town of Queensbury
- Norowal Marina & staff
- Harris Bay Yacht Club
- Darrin Freshwater Institute
- NYSDEC at Roger's Rock
- NYSDEC at Green Island
- Hacker Boat Co.
- John Breitenbach
- Our AIM dive crews and leaders

Anyone not found on the list please accept our sincerest thank you!

This document was prepared with financial assistance from the NYS Department of State with funds provided under Title 11 of the NYS Environmental Protection Fund Act.





## Executive Summary

Initially the management plan was structured similarly to years past except the lake was to be sectioned off into 3 zones – northern, middle and southern – and each of the three crews were assigned to one of those zones while each being separately funded by the either the LGA, FUND, or LGPC. This plan was theoretically sound but it quickly became apparent that it would become a logistical nightmare in terms of time spent where, crew sizes needed in certain areas and organizational funding in those 3 zones. The plan was scrapped in favor of one that saw crews work the largest and densest areas of the lake to dramatically reduce overall plant biomass and immediate swim-overs to collect any fragments and roots missed by heavy harvesting. The plan was geared to show the effectiveness of methodically working known dense sites and reducing them to sparse or scattered. This method serves as a model to how Lake George can be managed against Eurasian water milfoil (EWM) in the future. This technique is not new to AIM and actually serves as the core of operations.

Diver hours in 2016 were the second most with 4,000 and bag totals of 3,220 for an estimated grand total of 80,500lbs, 2015 saw 4,320 diver hours and 4,459 bags at 111,475lbs respectively. The ratio of bags per diver hour were minimally down from 2015's 1.03 to 2016's 0.81 likely due to repeat re-harvests after areas have been cleared of heavy infestation. This ratio should not be cause for alarm as all areas received more attention leading to lower bags counts due to less and less plant material found. This will allow crews to move through these areas quicker while giving native plant species the ability to repopulate previously EWM infested areas.

Overall, 2016 harvest operations were a success at reducing plant biomass in select areas that were problematic in past efforts and will most likely continue to be in future operations, however, less and less time should be allotted as EWM levels continue to decrease. This will allow crews to shift attention and increase time for other areas that were neglected in 2016. The adverse effect of concentrating efforts in these areas was other sites received little to no attention in 2016. In 2015, crews were able to visit most if not all sites but were unable to perform revisits to ones that deserved more attention and were forced to cut short time in certain areas in order to keep pace in scheduling. In a perfect situation, with increased time or possibly larger crew sizes, crews could effectively eliminate all dense and moderate beds, re-treat these areas with multiple swim-overs and move throughout the site list more efficiently. We refer to this approach as “front loading” by which a project is heavily funded in the beginning stages. The theory behind this is to overwhelm all EWM areas of the lake, dramatically reduce EWM plant biomass allowing for native plant repopulation and provide constant re-swims throughout the season. After the first year or two of this approach there should be noticeable reductions in EWM levels and time spent treating areas that were once abundant. The cost/benefit to the client will lead to decreases in project costs until a sustainable plateau is achieved between level of effort (crew size) and amount of time to efficiently and effectively cover all known growing areas. The goal is to find balance between these factors. In the case of Lake George, it is not so much as a time factor, since multiple AIM crews worked from mid-May until the



final week of October 10<sup>th</sup>, as it is a people power factor. Although the difference in diver hours from 2015 to 2016 decreased by 320 hours AIM crews successfully covered each area thoroughly and are reflected in season totals. 2016 totals were also aided by previous years of removal effort resulting in dramatically reduced totals from one year to the next.

There are areas of concern that would need extensive effort to cover effectively such as site 1 Northwest Bay, site 7 Village and site 20 Huddle Bay which went unmanaged in 2016. These sites are of high priority and are either large in size (site 1, 20), difficult to manage due to heavy boat traffic (site 7, 20) or both. Each of these sites are extremely fertile and multiple swims throughout the season are required to keep EWM levels in check.

This report will summarize each site or location that was harvested in the 2016 season along with recommendations to further the progress of reducing EWM levels across the board.

Harvest Locations include:

- Northwest Bay (Site 1)
- Sunset Bay (Site 2)
- Lake George Village (Site 7)
- Warner Bay (Site 11)
- Harris Bay (Site 14)
- Dunham's Bay (Site 19)
- Bay SW of Cannon Point (Site 26)
- North Tea Island Bay (Site 30)
- Gull Bay (Site 48)
- Elizabeth Island (Site 107)
- Glenburnie – Blair's Bay (Site 117)



## 2016 Total Bags Harvested/High Priority Sites

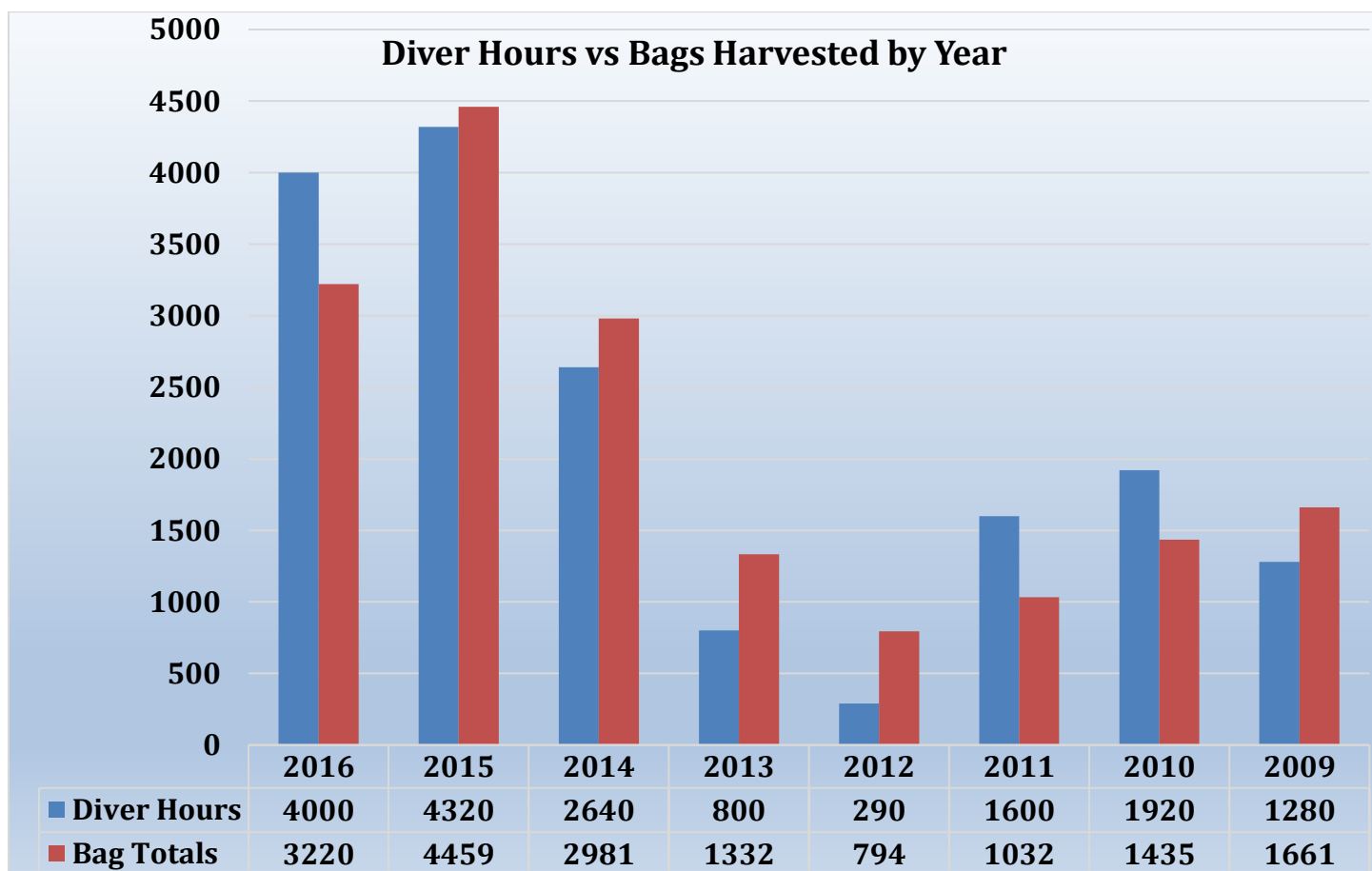
### Compared with 2015, 2014

Location	Site #	Bags Harvested		
		2016	2015	2014
Northwest Bay	1	1,005	310.5	44
Sunset Bay	6	428	261	44
Lake George Village	7	21	536	573
Warner Bay	11	212	829	626.68
Harris Bay	14	385	571	856.55
Dunham's Bay	19	34	50	122.51
Bay SW of Cannon Point	26	69	269	7
North Tea Island Bay	30	13	57	48
Gull Bay	48	424	0	0
Elizabeth Island	107	54	123	16.16
Glenburnie – Blair's Bay	117	575	64	43

- Northwest Bay - Increased attention in 2016 and 3 times the bag totals from 2015, however, more time is needed for thorough harvesting and re-treatment.
- Sunset Bay – First full harvest in 2016.
- Lake George Village – 2016 saw only 2 weeks of attention at the beginning of the season. This area receives some of the heaviest boat traffic on the lake making this extremely difficult to thoroughly harvest effectively resulting in low bag totals.
- Warner Bay – 2016 harvest yielded ~25% of 2015 totals. Warner Bay received extensive efforts.
- Harris Bay – Much like Warner, Harris Bay was thoroughly harvested and totals reflect diminishing EWM levels throughout the whole bay.
- Dunham's Bay – Extensive harvesting in previous has brought EWM levels down to successful management levels.
- Bay SW of Cannon Point – ~75% reduction in EWM totals leaving this site very manageable.
- North Tea Island Bay – EWM totals reflect an area in good management condition.

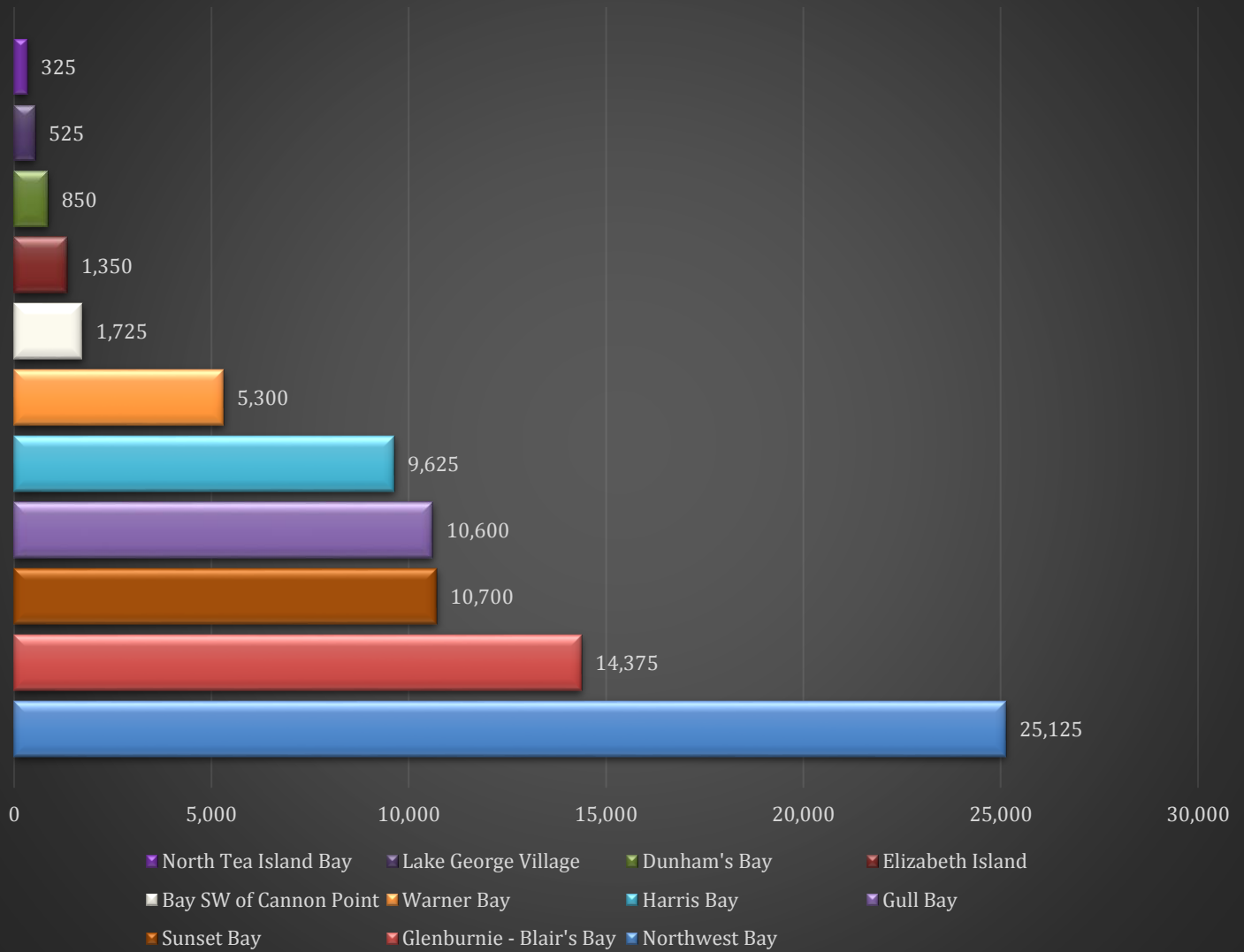


- Gull Bay – First ever full harvest and clean-up swims produced high bag totals. It is important to revisit this site in 2017 to evaluate previous efforts and harvest remaining plants.
- Elizabeth Island – This site proved to be problematic in years past being small but fertile and the existence of “satellite” patches in and around this site. Numerous diver hours were spent on clean-up swims.
- Glenburnie/Blair’s Bay – Extremely problematic site. EWM levels increasing year to year along with a very large, dense patch discovered adjacent to this site produced very high EWM totals. Crews spent time methodically patch picking and cleaning up any plant material left behind. Numerous site visits are recommended here to keep on top of growth.

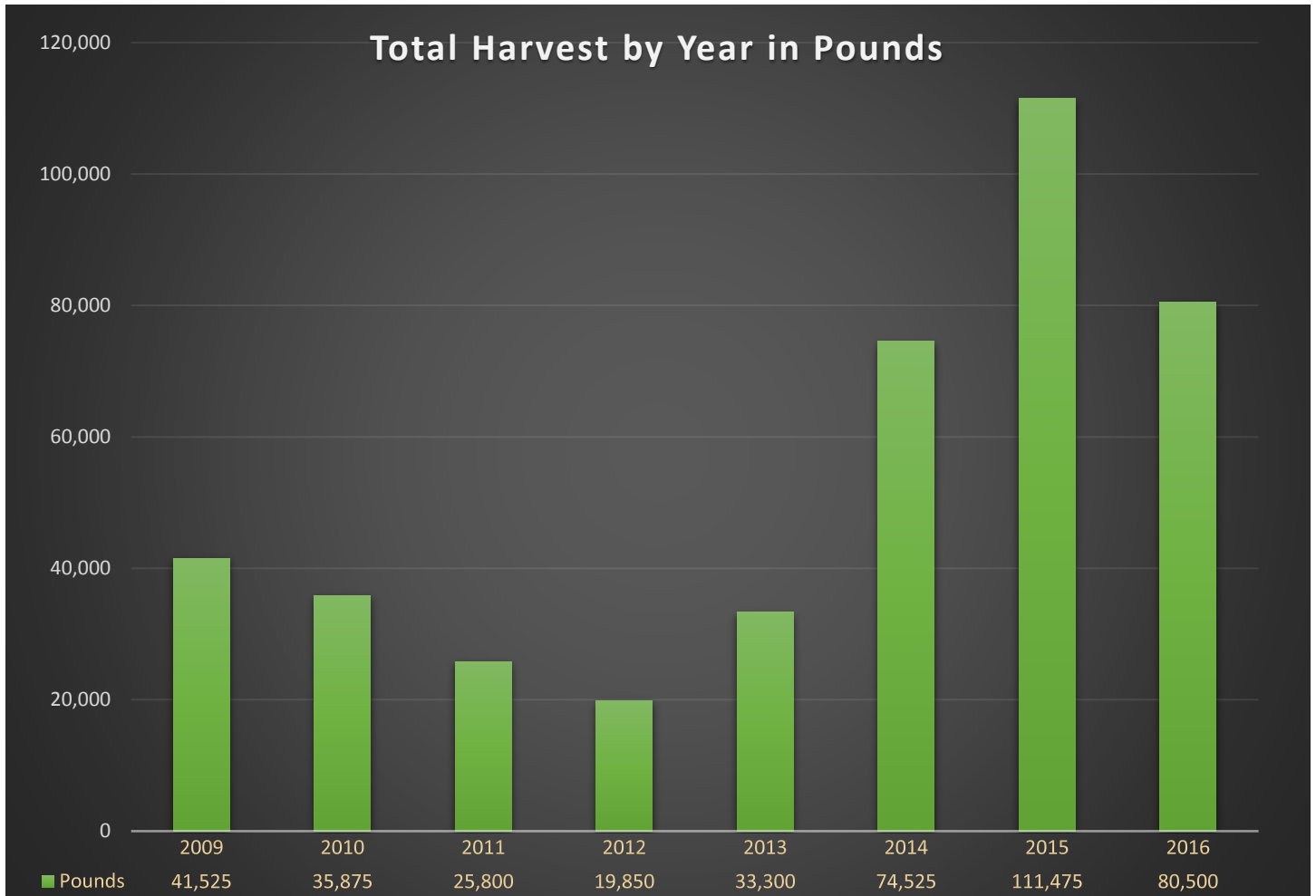




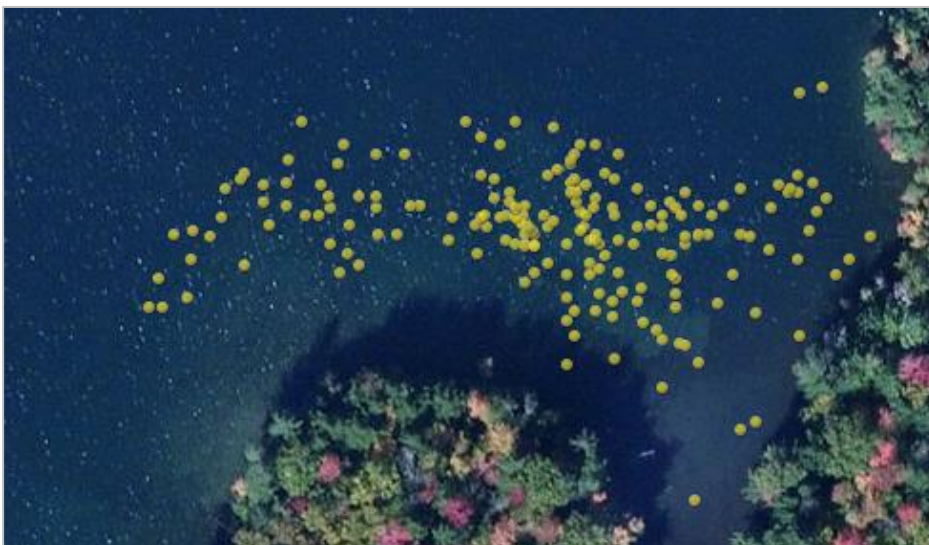
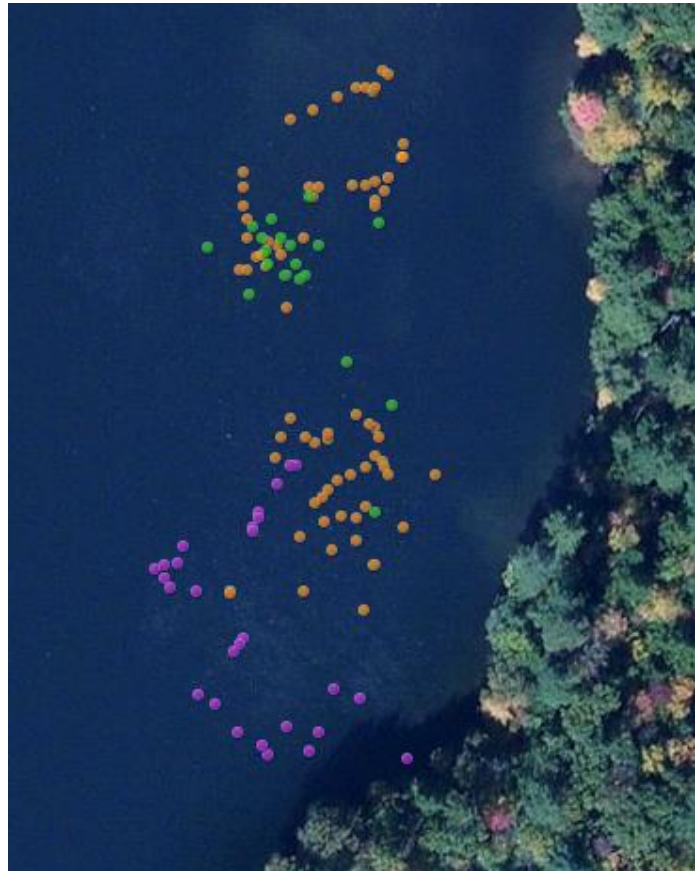
## 2016 Harvest Totals in Pounds







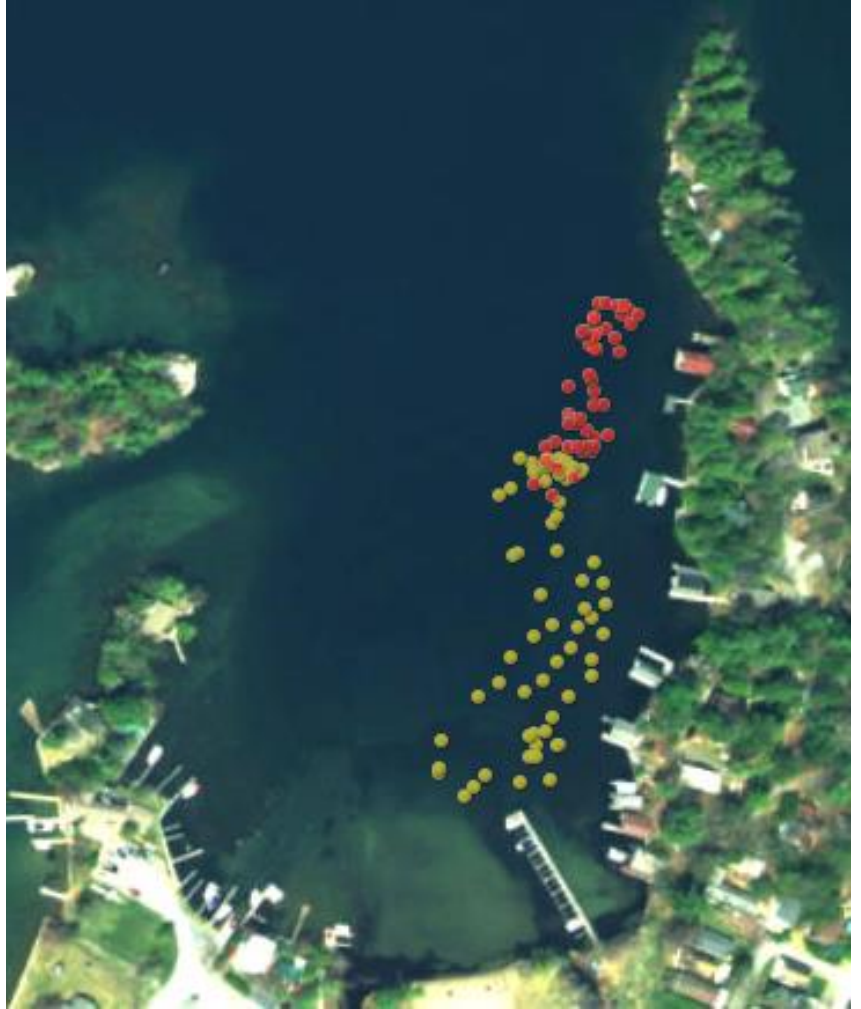
## Site #1 Northwest Bay



### Bag Harvest by Month

May	Purple	30
June	Orange	173
July	Green	62
August	Blue	----
September	Yellow	740
October	Red	----
<b>Total</b>		<b>1,005</b>

## Site # 6 Sunset Bay

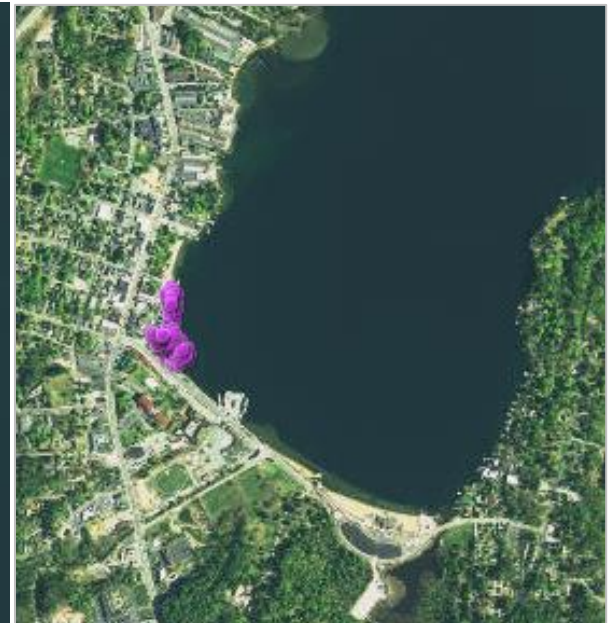
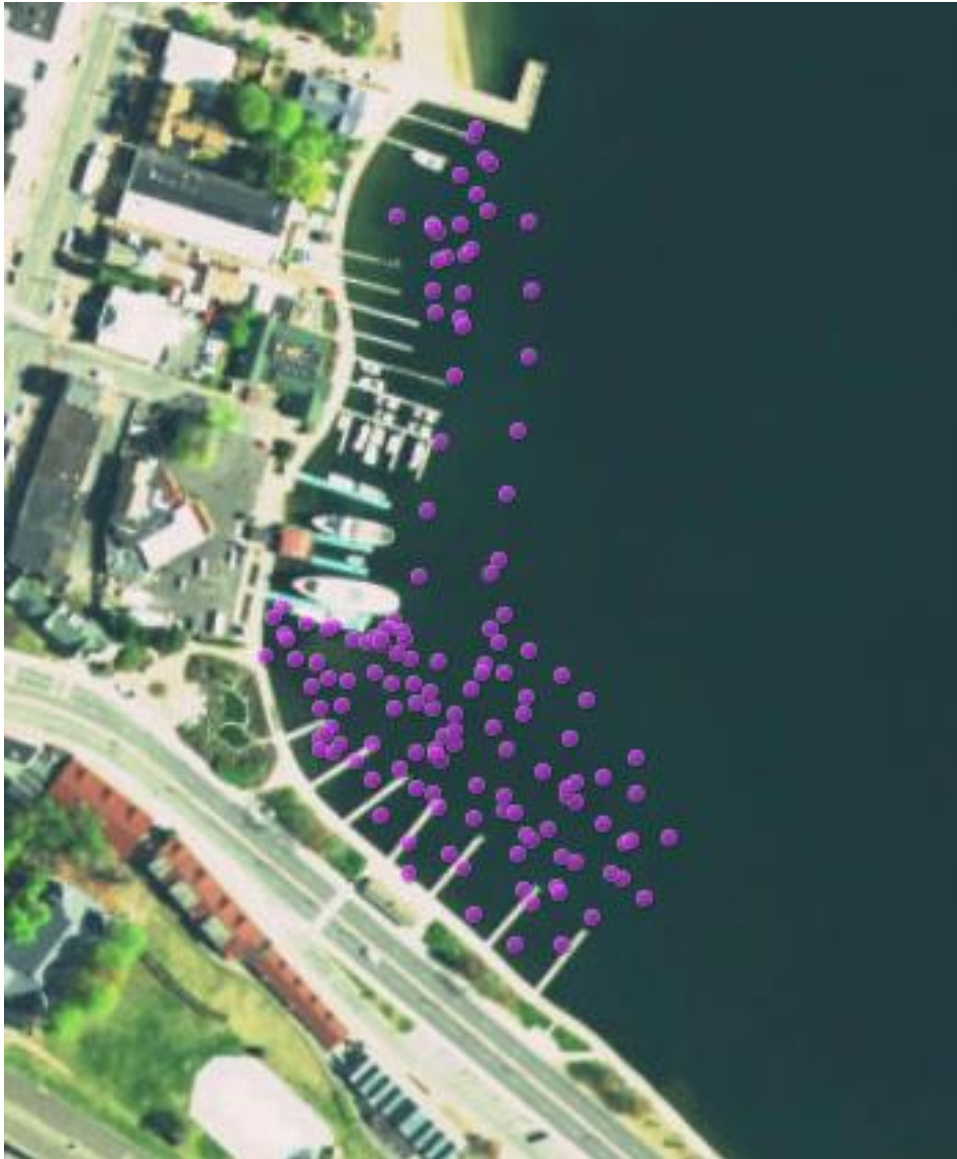


### Bag Harvest by Month

May	Purple	----
June	Orange	----
July	Green	----
August	Blue	----
September	Yellow	114
October	Red	<u>314</u>
Total		428



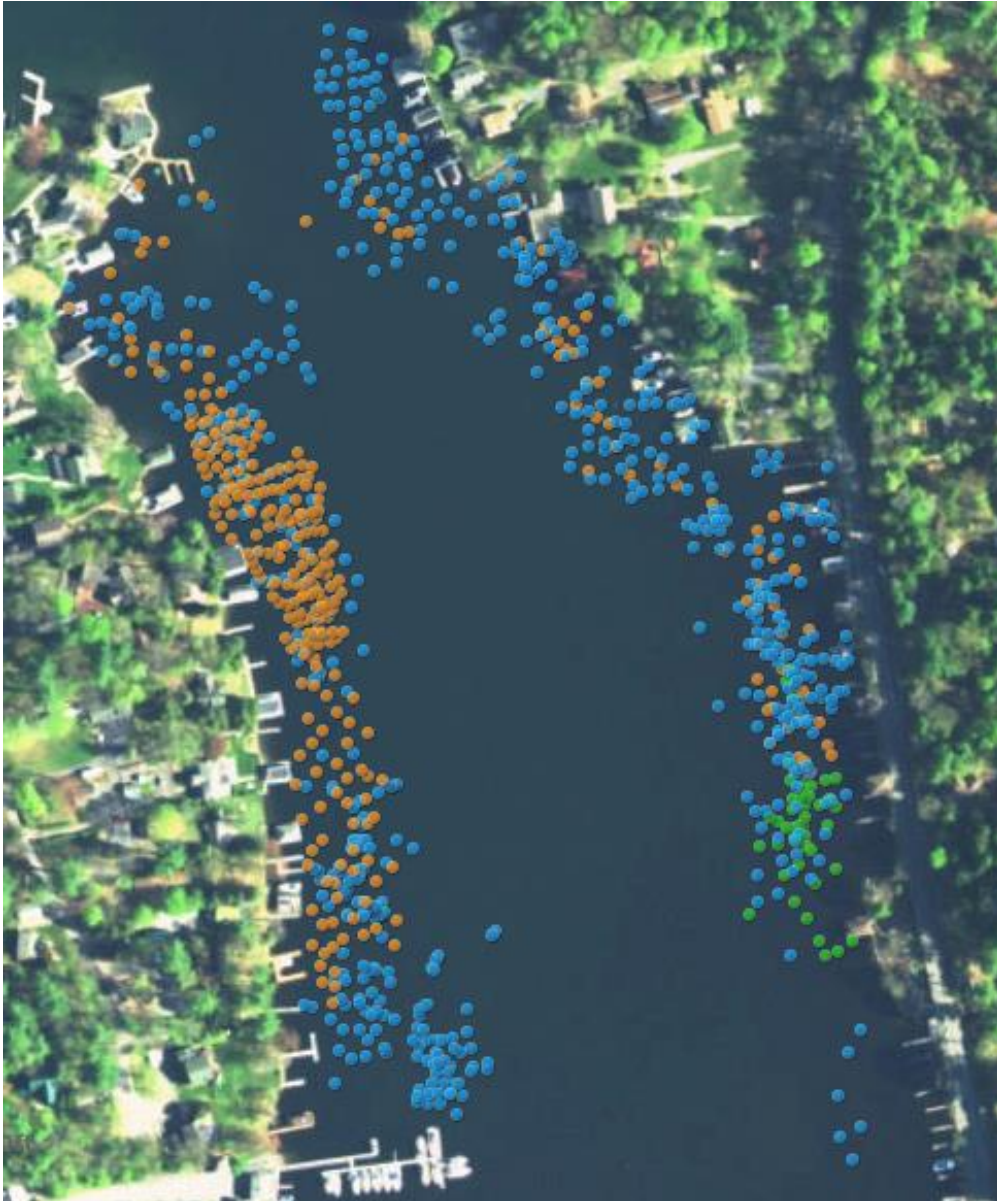
## Site # 7 Lake George Village



### Bag Harvest by Month

May	Purple	21
June	Orange	---
July	Green	---
August	Blue	---
September	Yellow	---
October	Red	---
Total		21

## Site # 11 Warner Bay



Bag Harvest by Month		
May	Purple	----
June	Orange	98
July	Green	22
August	Blue	92
September	Yellow	----
October	Red	----
Total		212





## Site # 14 Harris Bay

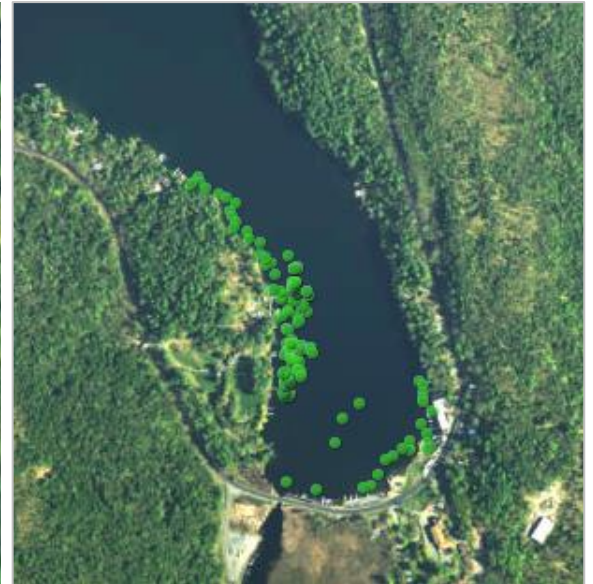


**Bag Harvest by Month**

May	Purple	----
June	Orange	----
July	Green	----
August	Blue	308.5
September	Yellow	76.5
October	Red	----
Total		385



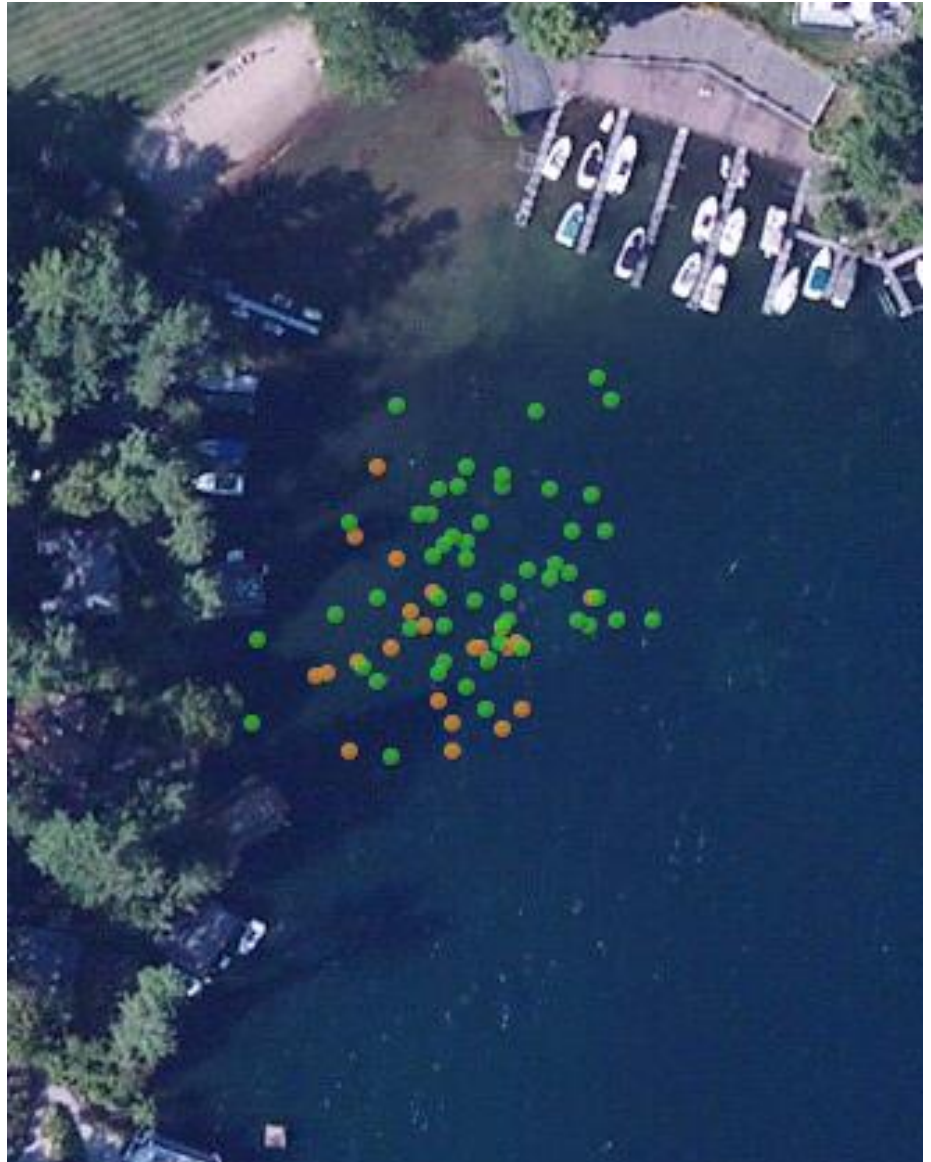
## Site # 19 Dunham's Bay



Bag Harvest by Month		
May	Purple	----
June	Orange	----
July	Green	34
August	Blue	----
September	Yellow	----
October	Red	----
Total		34



## Site # 26 Bay SW of Cannon Point



### Bag Harvest by Month

May	Purple	----
June	Orange	42
July	Green	27
August	Blue	----
September	Yellow	----
October	Red	----
Total		69





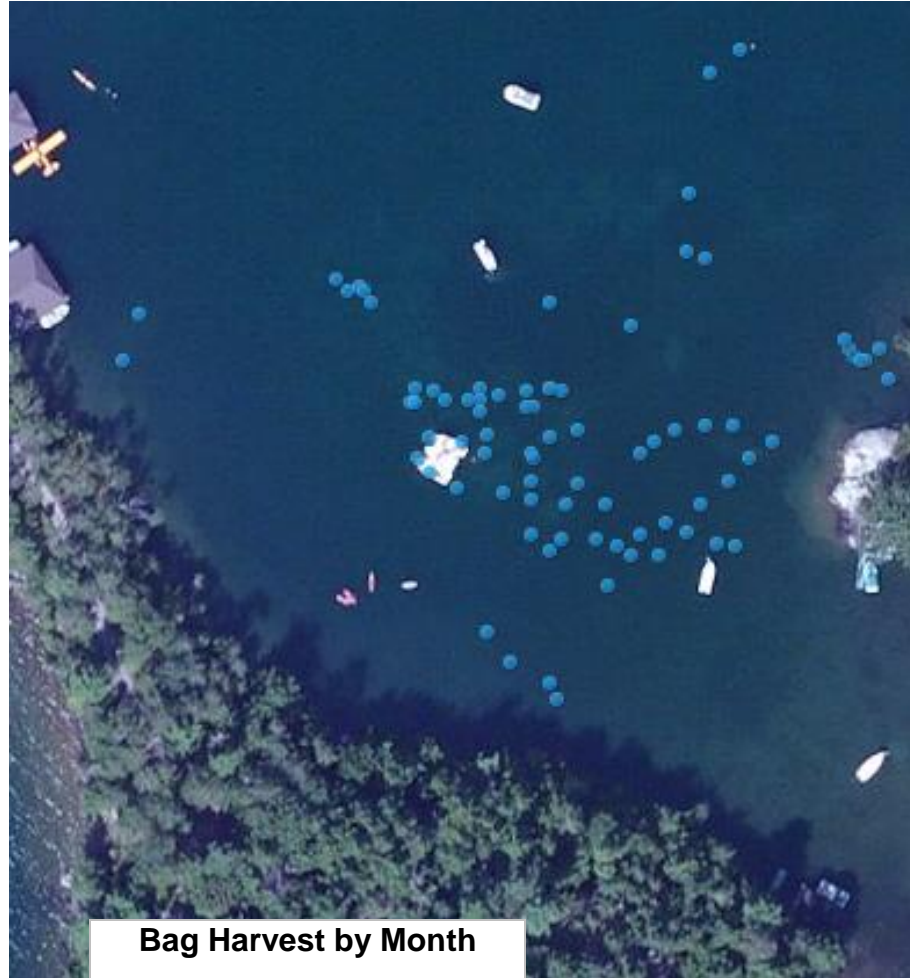
## Site #30 North Tea Island Bay



### Bag Harvest by Month

May	Purple	----
June	Orange	11
July	Green	2
August	Blue	----
September	Yellow	----
October	Red	----
Total		13

## Site # 48 Gull Bay

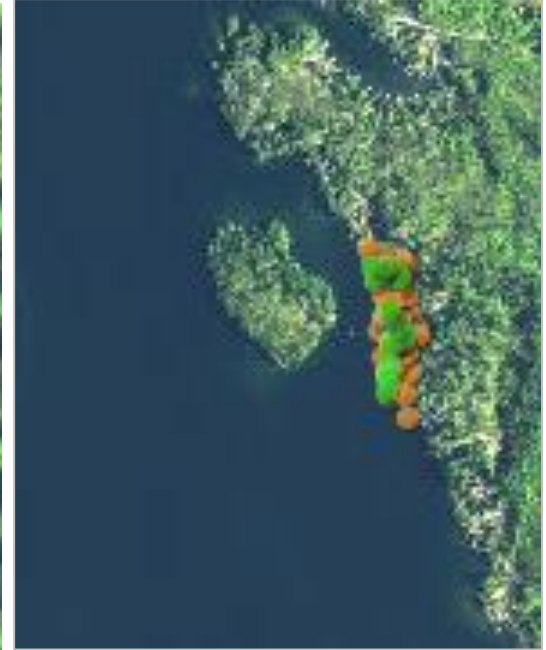


### Bag Harvest by Month

May	Purple	----
June	Orange	----
July	Green	----
August	Blue	424
September	Yellow	----
October	Red	----
Total		424

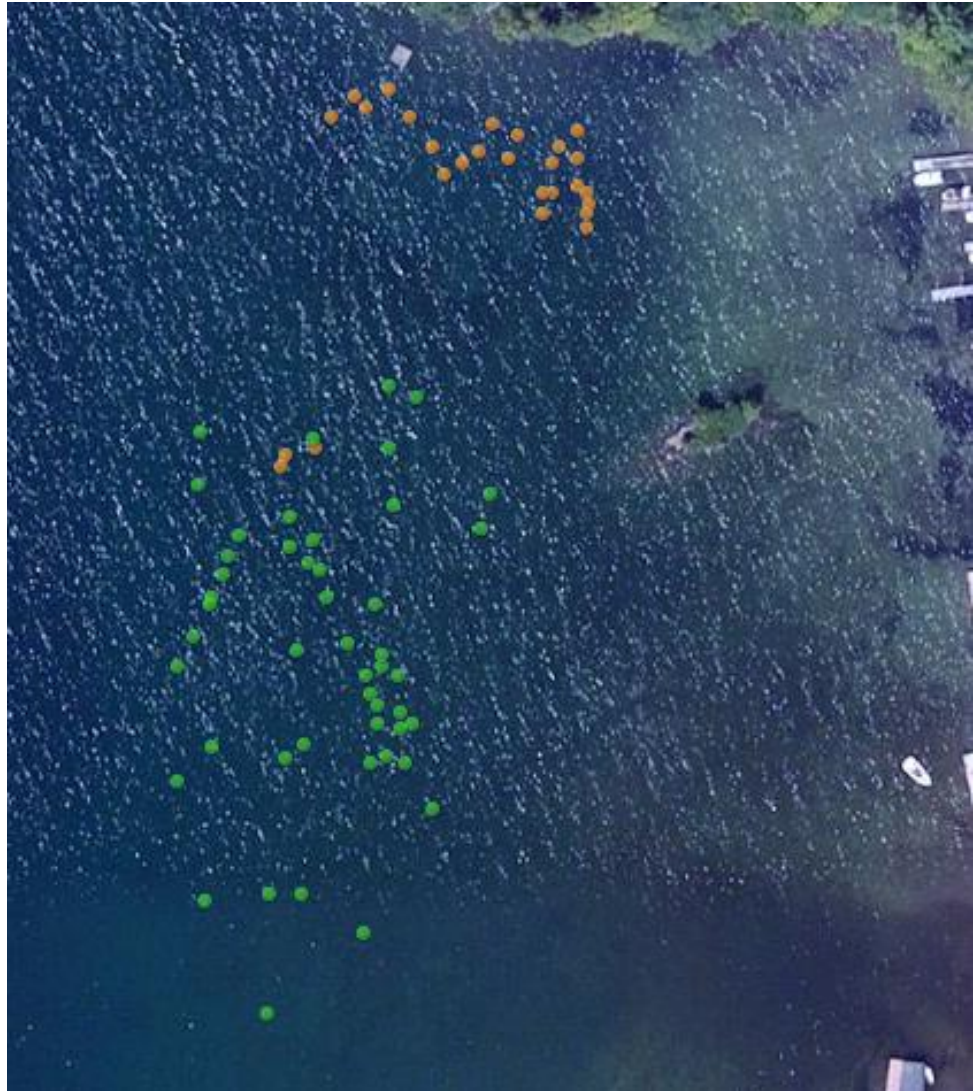
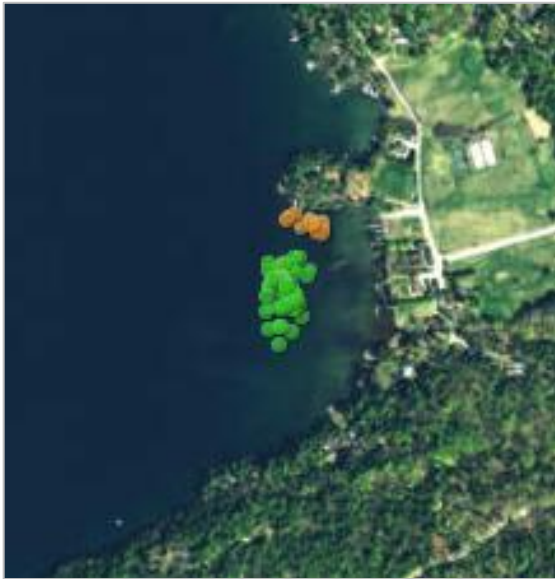


## Site #107 Elizabeth Island



Bag Harvest by Month		
May	Purple	----
June	Orange	31
July	Green	23
August	Blue	----
September	Yellow	----
October	Red	----
Total		54

## Site #117 Glenburnie-Blair's Bay



### Bag Harvest by Month

May	Purple	----
June	Orange	316
July	Green	259
August	Blue	----
September	Yellow	----
October	Red	----
Total		575



## Bag Totals by Site

Site #	Site Name	2016	2015	2014
<b>1</b>	<b>Northwest Bay - (Sites 1,22,24,35,53,79,80,95) *</b>	<b>1,005.00</b>	<b>310.50</b>	<b>44.00</b>
<b>2</b>	Bolton Bay at Conger's Point	0.00	0.50	0.43
<b>3</b>	Bolton Bay SW of Conger's Point	0.00	4.00	0.00
<b>4</b>	Huddle Bay NW of Sweetbriar Island	0.00	0.00	0.35
<b>5</b>	Sawmill Bay W shore of Green Island	0.00	0.50	3.00
<b>6</b>	<b>Sunset Bay</b>	<b>428.00</b>	<b>261.00</b>	<b>44.00</b>
<b>7</b>	<b>Lake George Village - ( Sites 7,8,21) *</b>	<b>21.00</b>	<b>536.00</b>	<b>573.00</b>
<b>8</b>	West Brook Delta - #7 *	0.00	304.00	59.00
<b>9</b>	Million Dollar Beach	0.00	0.00	3.00
<b>10</b>	East Brook Delta	0.00	0.00	0.00
<b>11</b>	<b>Warner Bay - (Sites 11,37,38,120,205-207) *</b>	<b>212.00</b>	<b>829.00</b>	<b>626.68</b>
<b>12</b>	Lake George Outlet	0.00	0.24	0.00
<b>13</b>	Mossy Point Boat Launch	0.00	2.75	1.00
<b>14</b>	<b>Harris Bay - (Sites 14,84,91,108,109,119,215) *</b>	<b>385.00</b>	<b>571.00</b>	<b>856.55</b>
<b>15</b>	Sawmill Bay – outflow of Finkel Brook	0.00	166.00	14.25
<b>16</b>	Middleworth Bay	0.00	9.25	26.25
<b>17</b>	Echo Bay – East End	0.00	2.25	5.50
<b>18</b>	Hague Boat Launch	0.00	10.00	54.50
<b>19</b>	<b>Dunham's Bay - (Sites 19,85,180,211) *</b>	<b>34.00</b>	<b>50.00</b>	<b>122.51</b>
<b>20</b>	Huddle Bay - (Sites 20,209,210) *	0.00	108.50	195.99
<b>21</b>	Sheriff Dock Area - #7 *	0.00	286.00	286.50
<b>22</b>	Shadow Bay - #1 *	0.00	0.75	0.27
<b>23</b>	Lake George Yacht Club	0.00	1.50	0.08
<b>24</b>	NW Bay – Bay between Fan and Bear Point - #1 *	0.00	18.00	0.00
<b>25</b>	Basin Bay – North tributary	0.00	12.50	0.01
<b>26</b>	<b>Bay SW of Cannon Point</b>	<b>69.00</b>	<b>269.00</b>	<b>7.00</b>
<b>27</b>	Bay NW of Cooper Point	0.00	8.00	0.00
<b>28</b>	Bay S of Hearthstone	0.00	0.00	0.00

\* Indicates 2015 reconfigured site – 2016 Bag totals listed under new site # indicated

**High priority**

**Moderate Priority**





## Bag Totals by Site

Site #	Site Name	2016	2015	2014
29	Bay NE of Tea Island	0.00	57.00	0.00
30	North Tea Island Bay - (Sites 30,148) *	13.00	57.00	48.00
31	English Brook	0.00	0.00	0.00
32	Crosbyside Culvert	0.00	0.00	0.00
33	South of Plum Point	0.00	0.00	0.00
34	Bay between Plum Point and Woods Point	0.00	0.00	0.00
35	NW Bay – Bay South of Fan Point - #1 *	0.00	0.17	0.35
36	Bay E of Dark Bay	0.00	0.50	0.01
37	South Warner Bay culvert - #11 *	0.00	129.00	310.50
38	North Warner Bay culvert - #11 *	0.00	104.00	310.50
39	South Katskill Bay	0.00	0.00	1.00
40	Bay South of Red Rock Bay	0.00	0.00	0.03
41	Paradise Bay	0.00	2.00	0.16
42	Bolton Bay	0.00	1.00	0.00
43	Bolton Bay	0.00	2.50	0.00
44	Bolton Bay – NE of Bridge	0.00	0.26	0.00
45	Tiroga Point Channel	0.00	0.00	3.00
46	Leontine/Clay Shoal	0.00	20.00	6.21
47	Smith Bay	0.00	1.00	0.26
48	Gull Bay	424.00	0.00	0.00
49	South of Burnt Point	0.00	0.00	0.00
50	Clark Hollow Bay Brook	0.00	8.25	9.50
51	Eichlerville Bay	0.00	6.00	0.71
52	Rogers Rock Park Beach	0.00	2.25	0.02
53	Southwest Tongue Mountain (Clay Bay) - #1 *	0.00	2.50	0.25
54	Cook's Bay, Hulett's Landing	0.00	0.00	0.00
55	Indian Bay, Hulett's Landing	0.00	1.00	0.31
56	South Sawmill Bay	0.00	0.00	0.00

\* Indicates 2015 reconfigured site – 2016 Bag totals listed under new site # indicated

**High priority**

**Moderate Priority**



## Bag Totals by Site

Site #	Site Name	2016	2015	2014
57	South end – Green Island	0.00	0.14	1.77
58	Silver Bay	0.00	3.00	6.39
59	Hondah Cottages	0.00	0.75	0.15
60	Camp Andrew Bay	0.00	1.00	0.00
61	Moonlight Bay, Harbor Island	0.00	0.56	1.08
62	Marine Village	0.00	0.00	0.00
63	South of Agnes Island	0.00	0.00	0.00
64	Three Brothers Island	0.00	1.00	2.47
65	W of Three Brothers Island	0.00	8.00	28.58
66	North Sawmill Bay	0.00	0.00	0.00
67	Bluff Head Creek	0.00	0.04	0.00
68	Rock Dunbar Island	0.00	0.68	0.74
69	Kitchal Bay	0.00	0.00	0.00
70	West Halfway Island	0.00	2.00	0.01
71	Hague Brook	0.00	13.50	0.00
72	South Cooks Bay	0.00	4.25	4.00
73	Tributary in Dark Bay	0.00	2.50	0.00
74	Point North of Agnes Island	0.00	0.00	0.01
75	Bell Point	0.00	0.50	0.30
76	South Shelving Rock Point	0.00	1.25	0.00
77	Walker Point	0.00	0.00	0.00
78	Bay North of West Tongue Mountain	0.00	0.00	0.00
79	Shore South of Bear Point - #1 *	0.00	0.26	0.00
80	Bay South of Bear Point - #1 *	0.00	0.50	0.03
81	Butternut Brook	0.00	0.00	0.00
82	Barber Bay	0.00	1.50	0.00
83	Van Warmer Bay	0.00	0.00	0.00
84	Harris Bay Inlet	0.00	0.00	0.00
85	Dunham Bay Inlet - #19 *	0.00	4.00	0.01
86	East Shore	0.00	0.00	0.00
87	Crosbyside	0.00	0.00	0.00
88	Crosbyside	0.00	0.00	0.00

\* Indicates 2015 reconfigured site – 2016 Bag totals listed under new site # indicated



## Bag Totals by Site

Site #	Site Name	2016	2015	2014
89	Crosbyside	0.00	0.00	0.00
90	South Tea Island Culvert - #30 *	0.00	10.00	19.00
91	Harris Bay – East Side	0.00	37.00	0.00
92	Bay East of Hens and Chickens	0.00	0.01	0.00
93	East of Refuge Island	0.00	0.00	0.00
94	Northwest of 3 Sirens Islands	0.00	0.00	0.00
95	N.W.B. Head of Bay - #1 *	0.00	0.13	0.00
96	Harris Bay/mid-bay	0.00	209.00	855.00
97	West Side Clay Island	0.00	95.00	0.00
98	South Jenkins Brook	0.00	0.00	0.00
99	Holman Hill Creek	0.00	2.00	0.05
100	Temple Island	0.00	0.00	0.00
101	Brook North of Green Point	0.00	0.02	0.02
102	South Tributary at 5-Mile Mountain	0.00	0.00	0.00
103	North of North Meadow Point	0.00	0.00	2.13
104	Assembly Point/West Bay	0.00	0.17	0.10
105	Assembly Point/Northwest	0.00	0.08	0.00
106	Assembly Point/Southeast Bay	0.00	12.00	0.00
107	Elizabeth Island	54.00	123.00	16.16
108	Harris Bay Culvert - #14 *	0.00	84.00	0.00
109	SW Happy Family Islands - #14 *	0.00	29.00	1.21
110	Diamond Point	0.00	0.00	0.00
111	NWB-NE Walker Point	0.00	0.00	0.00
112	Whale Rock, East of Agnes Island	0.00	1.00	0.00
113	Diamond Island	0.00	0.75	0.00
114	Sandy Bay – West Side	0.00	18.25	0.00
115	Cape Cod Village Bay	0.00	0.00	0.00
116	Holman Hill Creek – North	0.00	0.00	0.00
117	Glen Bernie – Blair's Bay	575.00	64.00	43.00
118	Blair's Bay, North	0.00	0.03	0.02

\* Indicates 2015 reconfigured site – 2016 Bag totals listed under new site # indicated

**High priority**

**Moderate Priority**





## Bag Totals by Site

Site #	Site Name	2016	2015	2014
119	East Side, HBYC - #14 *	0.00	0.00	0.00
120	North Warner Bay – Culvert - #11 *	0.00	0.00	2.43
121	Bay South of Paulist Fathers	0.00	0.00	0.00
122	Still Bay	0.00	5.25	0.00
123	West Flirtation Island	0.00	0.12	0.26
124	North Shelving Rock Pt.	0.00	0.50	0.00
125	East of Sagamore Island	0.00	0.00	0.00
126	NW of Dollar Islands	0.00	0.00	0.00
127	SW French Point	0.00	1.00	0.01
128	Bay North of Commission Point	0.00	3.00	2.62
129	Camp Sagamore	0.00	0.00	0.00
130	South Trib 5 Mile Mountain Brook	0.00	0.03	0.04
131	North Steere Island	0.00	0.00	0.01
132	Lamb Shanty Bay	0.00	0.00	0.00
133	Rogers Rock Club	0.00	0.00	0.00
134	St. Sacrament Island	0.00	0.00	0.00
135	Northeast Van Warner Bay	0.00	0.00	0.00
136	Pocket Bay, Assembly Point	0.00	0.00	0.00
137	West Dollar Island	0.00	0.00	0.00
138	Bay NE of Fan Point	0.00	1.25	1.15
139	NE Little Harbor Island	0.00	2.75	0.00
140	SE of three Sirens Island	0.00	0.00	0.00
141	Camp Andrew Bay, West	0.00	1.50	0.00
142	S. of Fox Island	0.00	0.50	0.00
143	S. of Bluff Head Creek	0.00	0.25	0.15
144	N. Jenkins Brook	0.00	0.00	0.00
145	Juniper Island	0.00	0.50	0.32
146	Blair's Bay-South	0.00	0.09	0.00

\* Indicates 2015 reconfigured site – 2016 Bag totals listed under new site # indicated

**High priority**

**Moderate Priority**



## Bag Totals by Site

Site #	Site Name	2016	2015	2014
147	Gull Island	0.00	0.07	0.05
148	West of Tea Island - #30 *	0.00	8.00	0.00
149	Fish Point	0.00	5.00	4.75
150	East Rock Bros. Islands	0.00	0.04	0.20
151	Indian Point	0.00	0.13	0.00
152	SE Elizabeth Island Channel - #107 *	0.00	4.50	2.68
153	Eye of the Needle	0.00	0.00	0.21
154	Roger's Slide	0.00	0.15	0.11
155	N. Juniper Island	0.00	0.00	0.01
156	NE cove Assembly Point	0.00	1.25	4.18
157	SE Canoe Island	0.00	0.04	2.84
158	South English Brook	0.00	0.00	0.00
159	Southeast Rock Bros. Islands	0.00	0.00	0.00
160	Van Buren Bay – S	0.00	0.07	0.00
161	East Speaker Heck Island	0.00	0.25	0.10
162	North Hazel Island	0.00	0.50	0.00
163	14 Mile Island	0.00	0.50	0.00
164	North Leontine Shoal	0.00	7.25	1.21
165	Basin Bay Shoal	0.00	5.00	0.13
166	Harris Bay – Shore Acres	0.00	2.25	1.17
167	Clay Island SW	0.00	14.00	0.00
168	SW Green Island	0.00	165.00	0.00
169	Arcady Bay	0.00	30.00	10.25
170	Red Rock Bay	0.00	1.00	0.08
171	South Delaware Island	0.00	0.00	0.00
172	North Black Mountain Point	0.00	0.00	0.00
173	Bolton Bay 2	0.00	1.00	0.28
174	Bolton Bay 3	0.00	0.17	4.66

\* Indicates 2015 reconfigured site – 2016 Bag totals listed under new site # indicated

**High priority**

**Moderate Priority**



## Bag Totals by Site

Site #	Site Name	2016	2015	2014
175	Blair's Bay South Shore	0.00	0.03	0.05
176	Sandy Bay	0.00	0.00	0.00
177	Arcady Bay Docks	0.00	0.11	0.13
178	Blair's Bay North Shore 1	0.00	0.00	0.00
179	Blair's Bay North Shore 2	0.00	0.00	0.00
180	Dunham's Bay – Midbay - #19 *	0.00	14.50	61.00
181	South Point Diamond Island	0.00	1.00	0.00
182	40-Acre Island	0.00	0.03	0.06
183	SW Walker Point	0.00	0.00	0.00
184	Bay View Marina	0.00	5.00	1.34
185	Oahu Island West	0.00	1.75	0.65
186	Dark Bay North #2	0.00	0.07	0.03
187	Sagamore Boat Works	0.00	5.00	31.50
188	Braley Point	0.00	0.13	0.00
189	Shore N. of Dark Bay	0.00	0.01	0.05
190	Shore W of Temple Knoll Island	0.00	0.00	0.00
191	Ruah Boathouse	0.00	0.46	0.51
192	South Temple Knoll Island	0.00	1.00	0.57
193	Arcady Bay Shoals	0.00	0.49	0.15
194	Tongue Mountain Point	0.00	0.05	0.25
195	W. Tongue Mountain 1	0.00	0.06	0.00
196	W Tongue Mountain 2	0.00	0.07	0.42
197	SE Fan Point	0.00	4.00	4.99
198	Scotch Bonnet Island	0.00	0.07	0.15
199	Snug Harbor South	0.00	0.17	0.08
200	South Bell Point	0.00	0.75	1.32
201	En Con Fuel Dock #2	0.00	0.09	2.25
202	Long Island SE	0.00	0.00	0.00

\* Indicates 2015 reconfigured site – 2016 Bag totals listed under new site # indicated

**High priority**

**Moderate Priority**



## Bag Totals by Site

Site #	Site Name	2016	2015	2014
203	Gull Bay South Cove	0.00	0.00	0.00
204	Rogers Rock Campground	0.00	24.00	63.50
205	NE Point Warner Bay - #11 *	0.00	0.00	3.25
206	Warner Bay Northwest - #11 *	0.00	0.00	0.00
207	Warner Bay Southwest - #11 *	0.00	596.00	0.00
208	Bay S of Barber Bay	0.00	4.00	0.34
209	Huddle Bay – South East - #20 *	0.00	64.50	65.33
210	Huddle Bay – West - #20 *	0.00	92.00	65.33
211	Dunham's Bay Sea Ray - #19 *	0.00	8.50	0.50
212	Asas Island	0.00	0.00	1.00
213	Small Island East of Asas	0.00	0.00	1.25
214	Gourd Island	0.00	1.00	0.00
215	Shore N of Harris Bay Yacht Club - #14 *	0.00	255.00	0.00
216	Shoal N of Hens and Chickens Islands	0.00	0.00	0.00

\* Indicates 2015 reconfigured site – 2016 Bag totals listed under new site # indicated

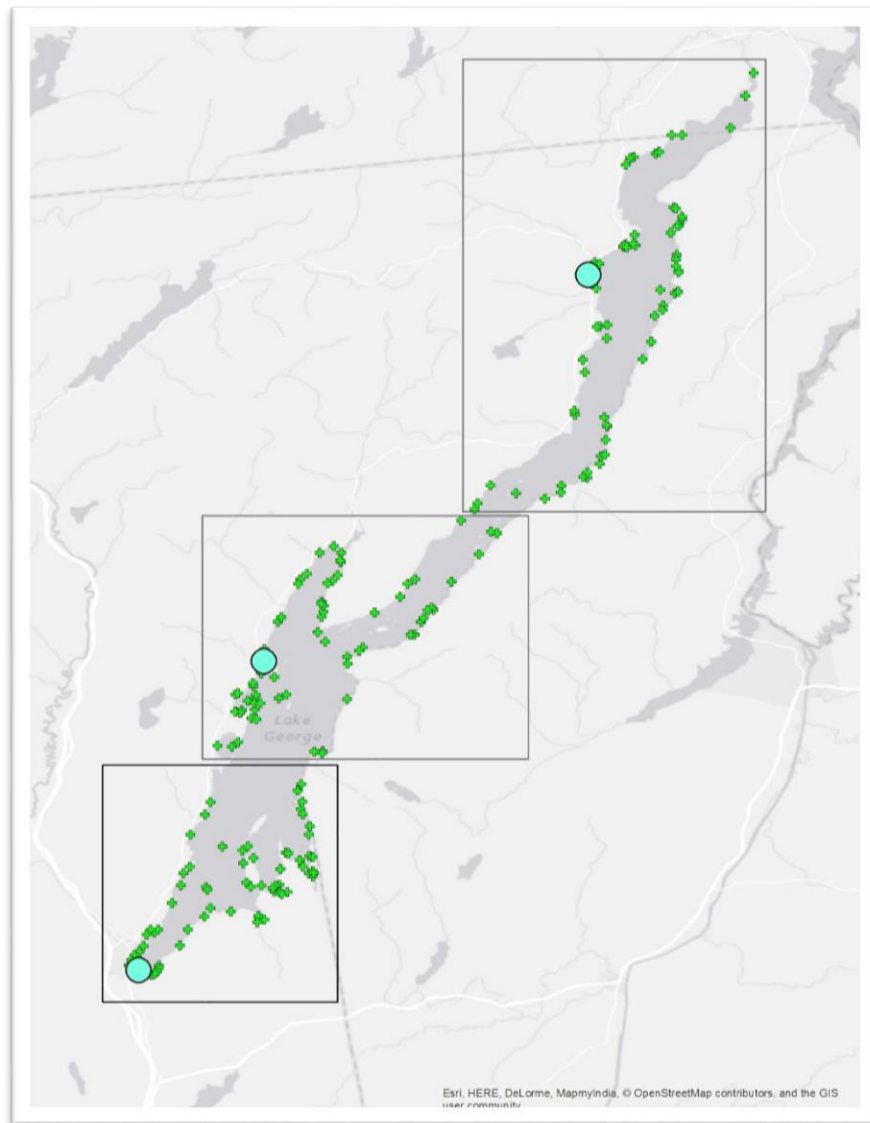
**High priority**

**Moderate Priority**

## 2016 Project Recap

### Initial Plan

- Divide Lake George into 3 zones (Norther, Mid-lake, Southern)





- Each zone managed by LGA, FUND or LGPC respectively
- 3 AIM dive crews would work each zone separately and assemble to complete larger areas
- Focus on completing revised site inventory by visiting each site at least once

## Actual Plan

In recapping the 2016 season, we found the initial plan to be difficult to implement while trying to achieve a full lake wide survey/harvest of all active EWM sites along with a systematic reduction of high/moderate sites to low/sparse. It was quickly realized that a shift in the plan would need to happen soon so that the season would not lag in terms of efficiency and productivity. This is when crews began to work only specific sites that were either high visibility, high/moderate density or both and in changing the approach crews were able to better observe their efforts in highly impacting EWM levels.

Throughout the rest of the season AIM crews systematically harvested and re-harvested these areas and were successful in reducing EWM levels and have shown the effectiveness (and necessity) for this type of effort. The two most limiting factors for any project, especially one of Lake George's scale, are time frames and budgetary constraints, however, efficient allocation of time within each budget will yield the best results.

## 2017 Strategy

Working within the same budget, timeframe and crew sizes as 2016 AIM suggests the following recommendations for 2017:

- Start in Village (site 7) as soon as weather permits to get as much time here as possible. The Village also serves as a great place to acclimate new divers into their respectable roles (2 weeks in mid-May/early June – all crews).
- First season harvest of high priority sites (9) of 2016 (3 weeks/1 week per site - early June to end of June).
- Attention to Huddle Bay is a must (1 week end of June to early July – 2 crews. 3<sup>rd</sup> crew begins site surveys/harvests of all known sites beginning in southern end and working north).
- Shift focus now to following the current site list.
- All 3 crew systematically survey/harvest all known sites until complete (~2 weeks).



- Return to high priority by combining 2 crews if necessary to harvest larger areas. Single crew will continue site surveys and perform clean-up swims if needed.
- Reevaluation of high, moderate, sparse, active, inactive, cleared, managed, unmanaged, and new sites to update site list (mid-season).
- Reference early season survey and return to low priority sites in need of attention.
- Continue the focus of working through areas quickly without sacrificing quality in order to move on to other sites.
- Season should finish in the Village after Labor Day.

## Conclusion

For any project, big or small, time and money are the deciding factors. As it is true that any project will benefit from increases in both we must recognize that there are limits as to what can be accomplished within certain constraints. This year saw a different plan in place and hopefully the positive effects will be noticed next season as decreased time spent harvesting high priority sites and increased time on the rest of Lake George. There is optimism coming into 2017 and by having the same budget AIM is confident this efficient plan will produce the desired results we are committed to.